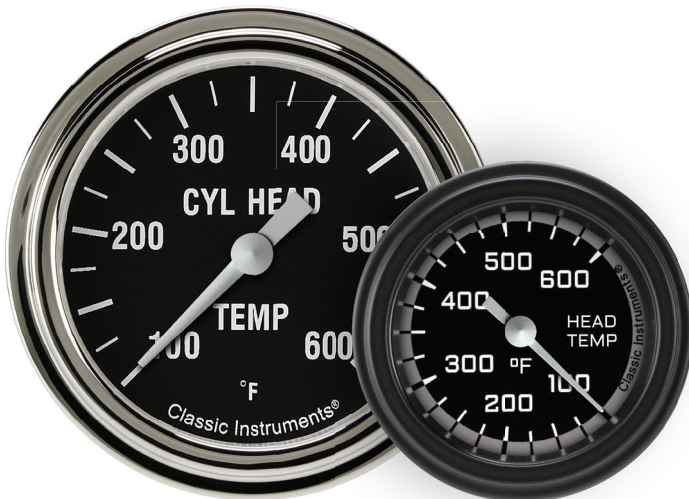


Classic Instruments Releases Exhaust Gas and Cylinder Head Temperature Gauges

Boyne City, MI, April 13th, 2017—Classic Instruments now offers full-sweep electric exhaust gas temperature and cylinder head temperature gauges, both available in the 2 1/8" and 2 5/8" sizes across all series. The new instruments include all of the great features offered on their other full-sweep instruments such as the rugged air-core movement, integrated red warning light that illuminates the gauge when the set point is reached, .5-4.5VDC analog data-logging output, and programmable LED lighting. The gauges arrive complete with wiring harness, installation hardware, and thermocouple. These temperature gauges will help drivers perfect their engine tuning for more efficient performance as well as monitor for safe EGT and cylinder head temperature to prevent damage to the engine.

All instruments are packaged individually and are available through any authorized Classic Instruments' dealer or direct. Visit Classic Instruments online at classicinstruments.com.

Cylinder Head Temperature Gauges



Exhaust Gas Temperature Gauges



For more information please contact the Classic Instruments team.

800.575.0461

info@classicinstruments.com

826 Moll Dr., Boyne City, MI 49712

###



CLASSIC INSTRUMENTS