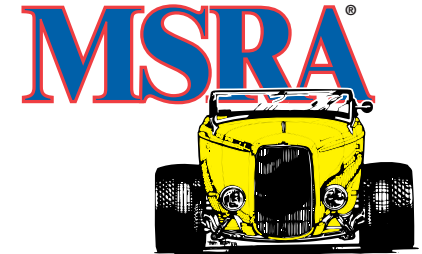


ENTER TO WIN

Classic Instrument's Custom Gauge Design

CONTEST



MINNESOTA STREET ROD ASSOCIATION

Contest in conjunction with
**MSRA'S ANNUAL
"BACK TO THE
50'S WEEKEND"
CAR SHOW**

"Back to the 50's Weekend" Gauge Design Contest Rules

Eligibility:

The design contest is open to anyone that attends the MSRA "Back to the 50's Weekend" show.

Technical Information on Designs:

1. All designs must be ORIGINAL IDEAS. You can draw your design on template (opposite side of rules) or submit it on a separate sheet. If you decide to use a design program please scale the drawing per the dimensions on the design template we have provided. Please be neat.
2. All designs must be on an 8.5" by 14" sheet of paper. (We would prefer white.) Detail work or close up views are encouraged of things such as a logo and they may be put on extra sheets.
3. The pointers for the gauges are illustrated on the right side of the design template. These are the avail-

able pointer sizes and designs that may be used with your design. The visible area is inside the dotted circle. Speedometer sweep is 270° and can go up to 200 MPH, Tachometers sweep is also 270° and can be calibrated for 6K, 7K, 8K or 10K. Small gauges are a 90° sweeps for Fuel (E, ¼, ½, ¾, F), Volts (8, 11, 13, 15, 18), and Oil pressure (0, 25, 50, 75, 100 psi). Temp gauge is a 100° sweep (140, 170, 195, 220, 280).

4. Your name and address MUST be marked clearly on EACH AND EVERY design sheet submitted, NOT just on the envelope or just one of the entries.
5. We encourage you to submit your designs in color. If there are very specific colors that you would like to use, please provide sample color swatches.
6. When you color your design, DO NOT use anything that requires spray fixative, or may smear, smudge, stick, or flake off on other people's drawings.

Where to Submit Designs:

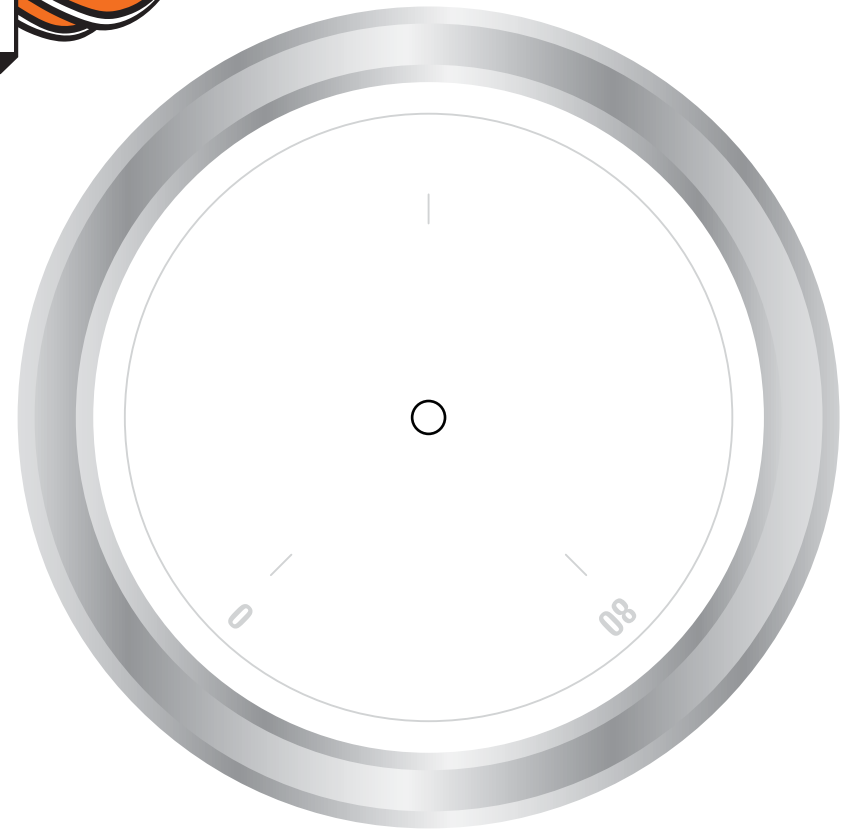
Designs need to be submitted to the Classic Instruments booth at the MSRA "Back to the 50's Weekend" show by noon on Sunday. Your designs will not be returned unless you request it. By submitting your designs to Classic Instruments you agree to the non-profit use and publication of said designs by Classic Instruments.

Judging:

A panel appointed by Classic Instruments will be assembled to judge the designs submitted. The judges will be selected to provide a representative cross-section of individuals with expertise in design and/or an interest in custom and classic cars. Judging of the contest will take place with the winner announced by September 1st.

Prizes:

The winner of the design contest will have two (2) gauge sets of their design built by Classic Instruments. One of the gauge sets built will be awarded to the winner at the following years "Back to the 50's Weekend" show and the winner will take it home on Sunday at the close of the show. The retail value of the prize is in excess of \$1,500.00. The second set will be put into the auction during the Back to the 50's show and the proceeds from the auction will go directly to the MSRA's scholarship foundation. The foundation is a non-profit organization which provides educational scholarships to the members and the children of MSRA members. Classic Instruments is proud to contribute to the ongoing success of the MSRA scholarship foundation.



Timeless Quality Since 1977 with the Simple Goal of Perfection.



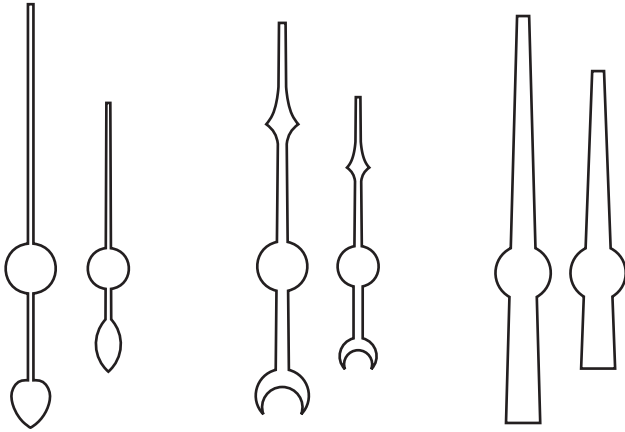
PO BOX 411 or 1299 M-75 South Boyne City, MI 49712
www.classicinstruments.com 800.575.0461

Hand deliver completed designs to the Classic Instruments booth during the MSRA "Back to the 50's Weekend" show before Noon on Sunday.

Designer	
Name	
Address	
Phone	
Email	



POINTER CHOICES



DESIGN DETAILS:

Gauge Color: _____

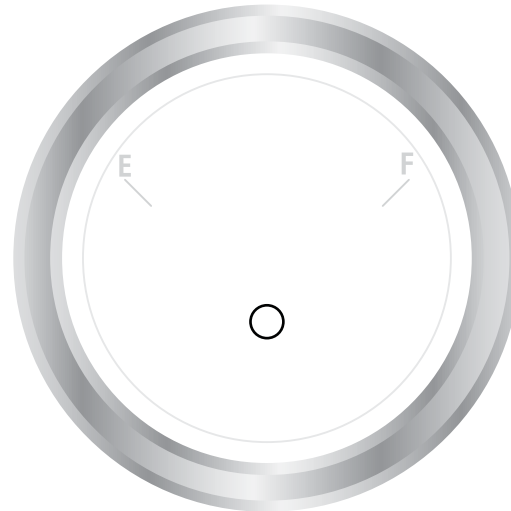
Indicie Color: _____

Font Color: _____

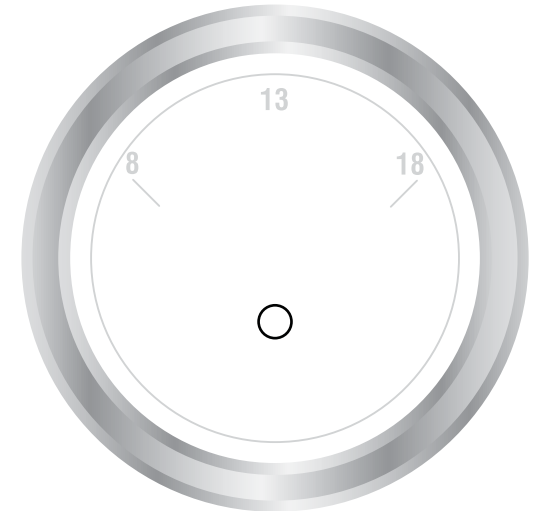
Font Name: _____

Pointer Color: _____

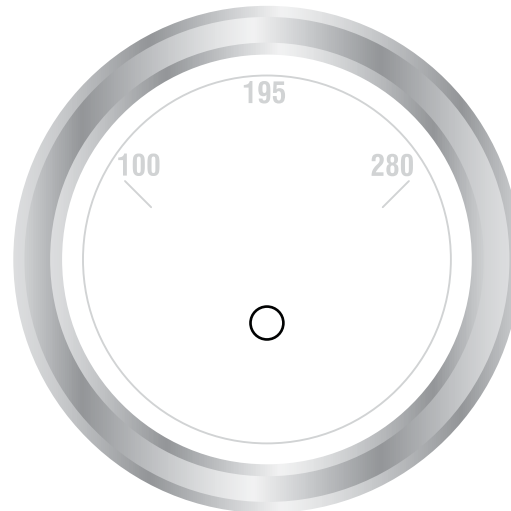
Notes: _____



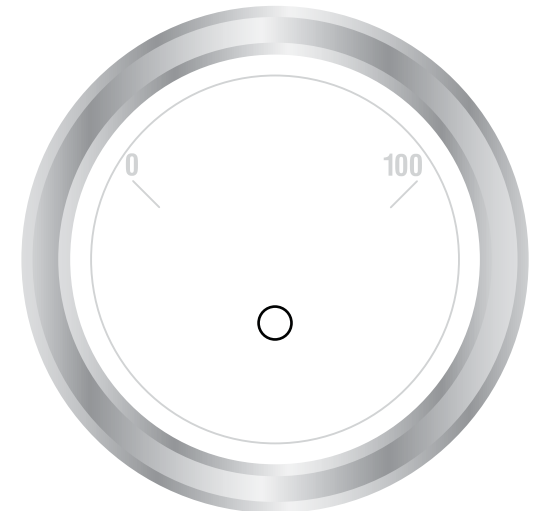
FUEL



VOLTS



TEMP



OIL

Timeless Quality Since 1977 with the Simple Goal of Perfection.